

**LUNG CANCER
RESEARCH
FOUNDATION**
Living. Breathing. Science.®

2020 ANNUAL REPORT



Our Mission

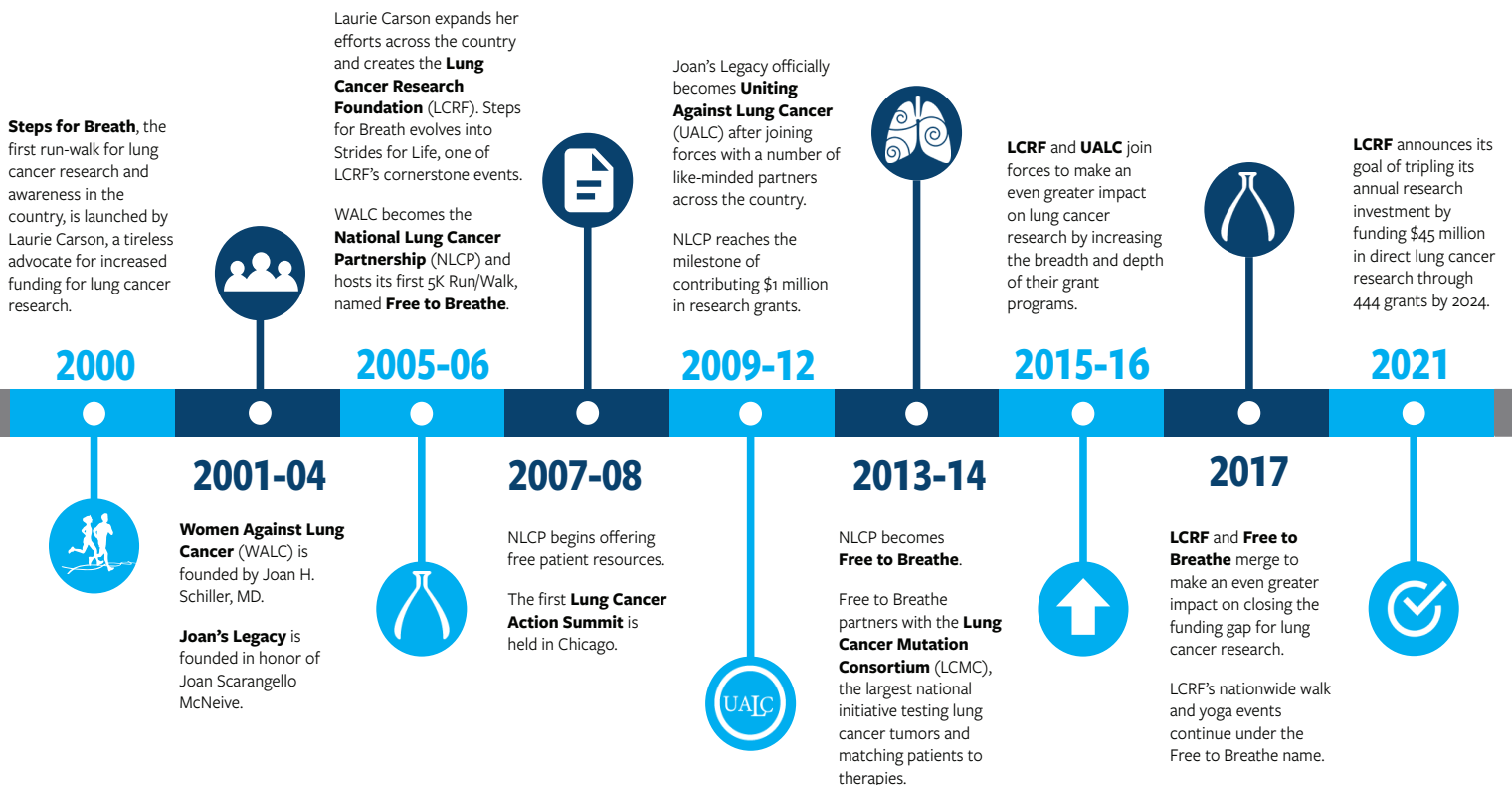
The mission of the Lung Cancer Research Foundation (LCRF) is to improve lung cancer outcomes by funding research for the prevention, diagnosis, treatment and cure of lung cancer.

Our Vision

Our vision is a world free of lung cancer.

LCRF History

The Lung Cancer Research Foundation has evolved over the years, but one thing remains the same: we are determined to create a world without lung cancer. **Together, we can accomplish more than any one of us can alone.**



LCRF's Research Programs

To date, LCRF has funded 383 research grants, totaling nearly \$36 million. LCRF intends to fund a total of \$45 million in direct lung cancer research through 444 grants by 2024.

LCRF Research Grant Program

The LCRF research grant program funds innovative projects across the full spectrum of basic, translational, clinical, epidemiological, health services, and other research, with a focus on early investigators.

LCRF Research Grant on Disparities in Lung Cancer

Lung cancer disproportionately affects various groups, including African Americans and populations in certain geographic locations. This program funds research on a variety of disparities-related topics.

LCRF Research Grant on Tumor Mutations

This grant program, supported by AstraZeneca, will fund innovative projects that aim to understand primary and acquired resistance to those therapies and to discover novel drug combinations that target concurrent driver mutations for immune mediated adverse events for patients on certain targeted therapies.

Lung Cancer Mutation Consortium

The Lung Cancer Research Foundation coordinates and supports the activities of the Lung Cancer Mutation Consortium (LCMC), an association of more than 20 U.S. cancer centers committed to deepening our understanding of the genetic changes that underlie lung cancers and on improving outcomes in patients whose tumors harbor these oncogenic drivers. Learn more at LCRF.org/LCMC.

2020 Grantees

LCRF Pilot Grant Program

Michael Zimmermann, PhD

European Molecular Biology Laboratory (EMBL, Germany)

Identifying risk factors for lung cancer predisposition through systematic evaluation of environmental carcinogens' activation by the respiratory tract microbiota

William Lockwood, PhD

British Columbia Cancer Agency (Canada)

SNF2 Histone Linker PHD RING Helicase as a novel tumor suppressor gene and risk factor in lung adenocarcinoma development

Chengcheng Jin, PhD

University of Pennsylvania

Targeting the IL-1beta pathway for lung cancer treatment

Hideko Isozaki, PhD

Massachusetts General Hospital

Targeting APOBEC3A induction as a new therapeutic strategy to prevent acquired drug resistance in non-small cell lung cancer

Disparities in Lung Cancer Research Grant Program

Hilary Robbins, PhD, MPH

International Agency for Research on Cancer (France)

Development of risk prediction models to ensure equitable eligibility for lung cancer screening in minority populations

Marjory Charlot, MD, MPH

University of North Carolina

Understanding the immune landscape of non-small cell lung cancer in African Americans

Chengguo Xing, PhD

University of Florida

Contributions of tobacco exposure, NNK, and stress to lung cancer risk disparities between AA and CA male smokers

Joshua Campbell, PhD

Boston University

Determining differences in immunotherapy outcomes and immunobiology in African American patients with NSCLC

Community Outreach Programs



Free to Breathe

LCRF moved its events program online for 2020. Free to Breathe Yoga, Kites, and Walk bring participants from all over the nation together to honor loved ones, share community, and fund future lung cancer research. Find out more at LCRF.org/events.

Patient Resources & Support Line

LCRF offers free patient materials as well as a toll-free support line: (844) 835-4325

Evening of Innovation

This special event during Lung Cancer Awareness Month in November recognizes newly awarded grantees and highlights the progress that has been made in lung cancer research over the previous year.

#TogetherSeparately livestreams

During the 2020 pandemic, LCRF initiated a series of livestreams to address common questions from patients and caregivers. This grew into an ongoing series with an online community hosted on Facebook Groups. Webinars are on the third Wednesday of each month. Learn more at LCRF.org/togetherseparately.



Breathe Easy: Good News About Lung Cancer Screening A Guide for Black Americans



African Methodist Episcopal (AME) Church

Breathe Easy Outreach to Black Americans

LCRF and the African Methodist Episcopal Church International Health Commission (AMEC IHC) are working together to raise awareness among Black Americans of the prevalence, risk factors, importance of screening, and prevention of lung cancer. Find out more at LCRF.org/knowyourrisk.

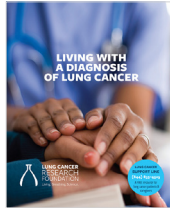


Educational Resources

LCRF provides free resources for patients with lung cancer, caregivers, and health care providers. Below are some of the publications offered. A comprehensive list can be found at [LCRF.org/resources](https://www.lcrf.org/resources).

Living with a Diagnosis of Lung Cancer

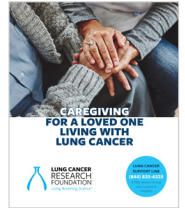
Addresses basic questions on lung cancer, treatment options, maintaining hope, and much more. Also available in Spanish.



Caregiving for a Loved One

Living with Lung Cancer

An overview of what to expect as a caregiver of a lung cancer patient, helpful tips, and resources.



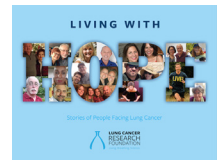
My Lung Cancer Care Plan

For recording information on diagnosis, tracking treatment and appointments, monitoring symptoms, and much more. Also available in Spanish.



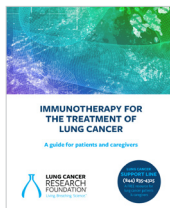
Living with Hope

Provides stories of hope shared by patients, caregivers, and survivors.



Immunotherapy for the Treatment of Lung Cancer

An introduction to immunotherapy treatment, how immunotherapy works, and typical side effects.



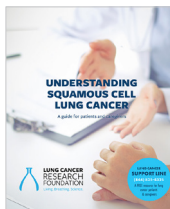
Support Line Flyer

Displays contact and resource information about the Lung Cancer Support Line for patients with lung cancer and their caregivers.



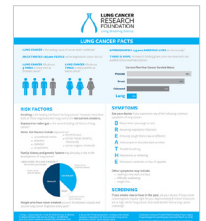
Understanding Squamous Cell Lung Cancer

Explains squamous cell carcinoma and how it can be treated.



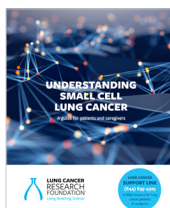
Lung Cancer Fact Sheet

A tool to raise awareness of the incidence and causes of lung cancer, and the role of lung cancer research in making advances in the field.



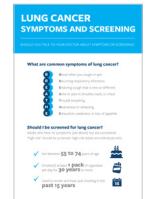
Understanding Small Cell Lung Cancer

Explains a small cell lung cancer diagnosis and associated treatment options.



Lung Cancer Symptoms and Screening

Identifies some of the common symptoms of lung cancer and screening recommendations for those who may be at high risk of lung cancer.



Biomarker Testing for Lung Cancer

Explains the process and importance of biomarker testing to help patients determine if they are eligible for targeted therapies.



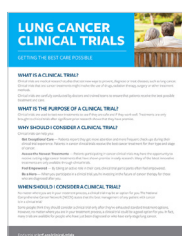
Scientific Grants Program Bookmarks

Showcase LCRF's scientific grants program. One bookmark includes key statistics on research advances made possible by LCRF's grants program and one features quotes from several LCRF grantees.



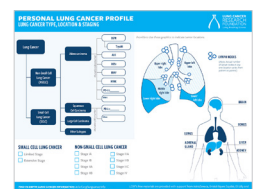
Lung Cancer Clinical Trials

An introduction to immunotherapy treatment, how immunotherapy works, and typical side effects.



Personal Lung Cancer Profile

For physicians to use as a tool when speaking to patients about their diagnosis and recommended treatment plan. Also available in Spanish.



LCRF BOARD OF DIRECTORS

As of December 31, 2020



BRENDON M. STILES, MD

Board Chair, LCRF Board

Chief, Division of Thoracic Surgery and Surgical Oncology
Associate Director, Surgical Services, Montefiore-Einstein Cancer Center



KIMBERLY KRAVIS

Vice Chair, LCRF Board
Philanthropist



MARY ANN TIGHE

Vice Chair, LCRF Board
CEO, CBRE



AARON M. TIGHE

Treasurer, LCRF Board
Managing Director, Credit Suisse
Co-Chair, Guggenheim Museum
Photography Acquisition Committee



KATERINA POLITI, PHD

Associate Professor of Pathology and
Internal Medicine, Yale School of Medicine



JOAN SCHILLER, MD

Professor, Department of Medicine
Section of Hematology Oncology,
University of Virginia



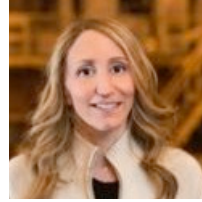
RAYMOND E. CHALMÉ

CEO & Partner, Broad Street
Development LLC



PETER M. FRY

Managing Director, Head of
Alternative Equities, SVB Leerink, LLC



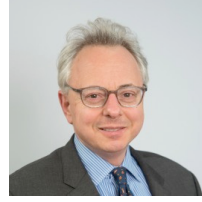
JILL FURMAN

Theater producer



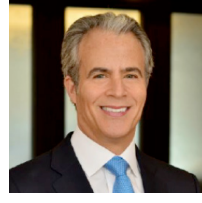
REINA HONTS

Fashion industry executive



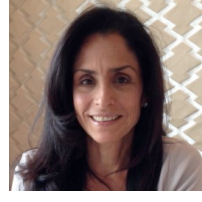
RONALD D. SERNAU

Co-chair, Real Estate Department,
Proskauer



SCOTT L. STACKMAN

UBS Private Wealth Management

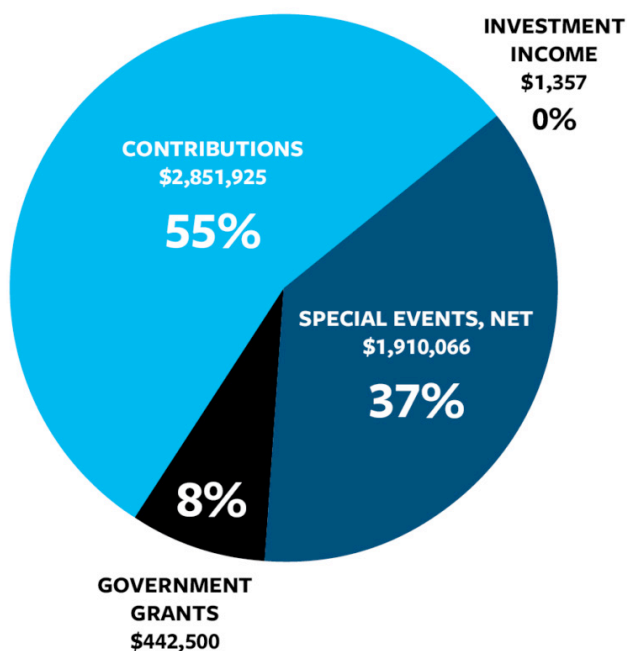


ROSE ANN WEINSTEIN

Fashion designer

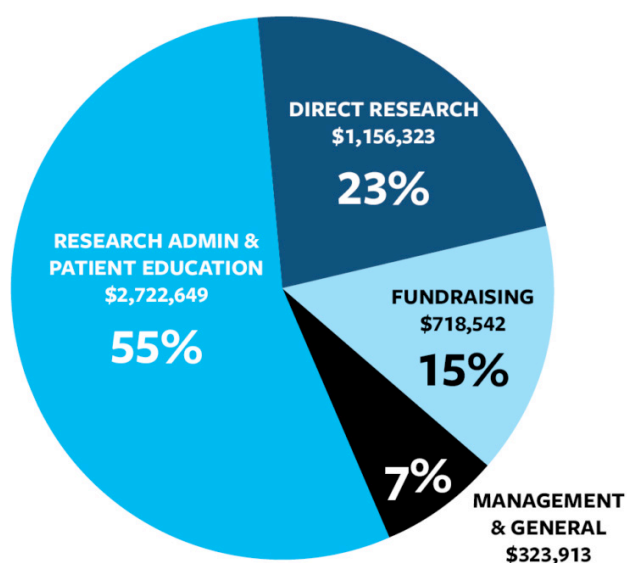
2020 Financials

To view the Lung Cancer Research Foundation's complete audited financial statements and Form 990, please refer to our website [LCRF.org/financials](https://www.lcrf.org/financials).



FUNDING SOURCES

Contributions and grants	\$2,851,925
Event revenue	\$1,910,066
Government grant and other	\$443,857
Total	\$5,205,848



YOUR DOLLARS AT WORK

Program services	\$3,878,972
Fundraising	\$718,542
Management and general	\$323,913
Total	\$4,921,427

NET ASSETS

Total net assets Dec 31, 2020	\$2,694,234
-------------------------------	--------------------