

**LUNG CANCER
RESEARCH
FOUNDATION**
Living. Breathing. Science.®

ABOUT LCRF



Our Mission

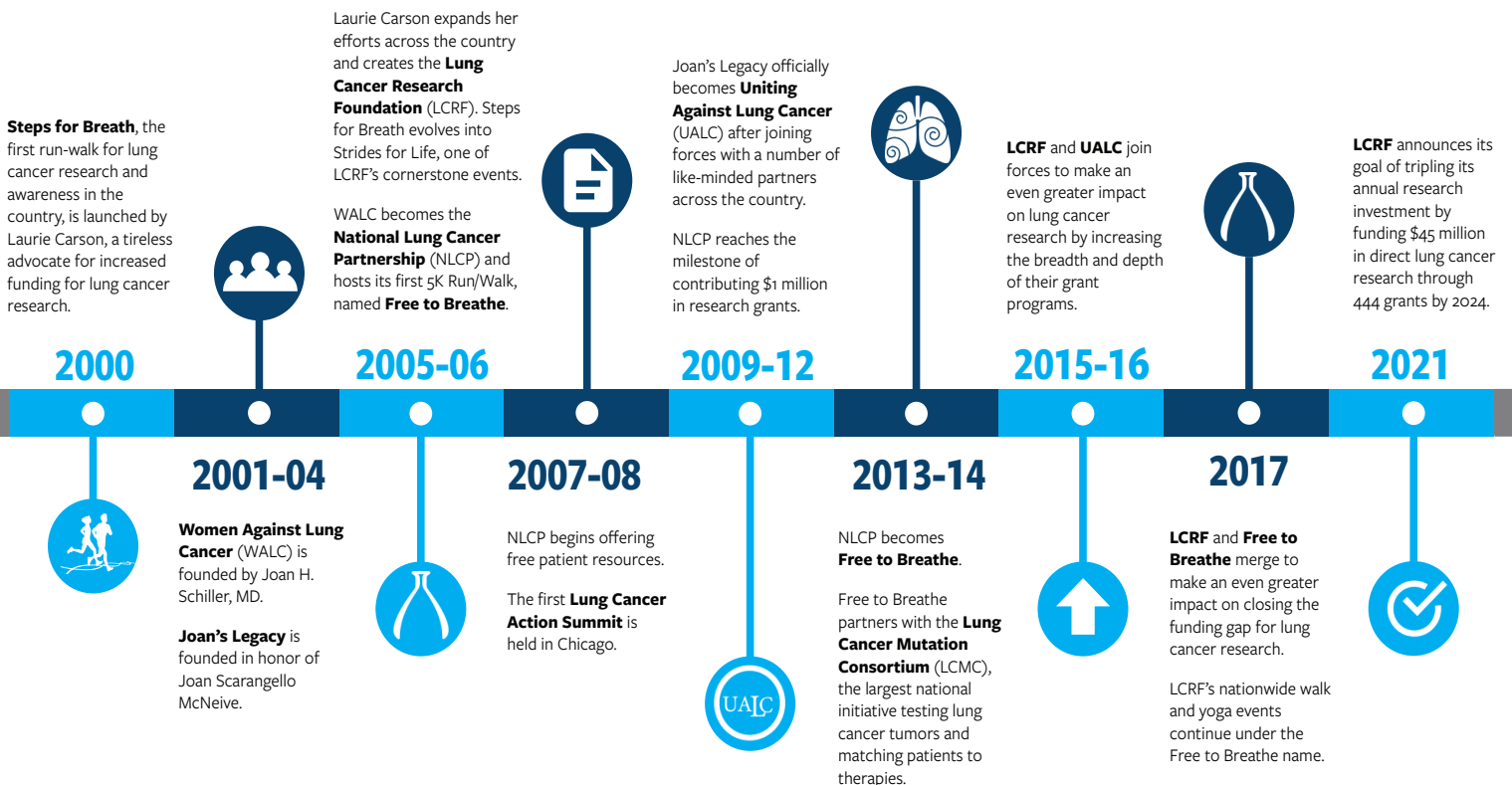
The mission of the Lung Cancer Research Foundation (LCRF) is to improve lung cancer outcomes by funding research for the prevention, diagnosis, treatment and cure of lung cancer.

Our Vision

Our vision is a world free of lung cancer.

LCRF History

The Lung Cancer Research Foundation has evolved over the years, but one thing remains the same: we are determined to create a world without lung cancer. **Together, we can accomplish more than any one of us can alone.**



Research Programs

To date, LCRF has funded 383 research grants, totaling nearly \$36 million. LCRF intends to fund a total of \$45 million in direct lung cancer research through 444 grants by 2024.

LCRF Research Grant Program

The LCRF research grant program funds innovative projects across the full spectrum of basic, translational, clinical, epidemiological, health services, and other research, with a focus on early investigators.

LCRF Research Grant on Disparities in Lung Cancer

Lung cancer disproportionately affects various groups, including African Americans and populations in certain geographic locations. This program funds research on a variety of disparities-related topics.

LCRF Research Grant on Tumor Mutations

This grant program, supported by AstraZeneca, will fund innovative projects that aim to understand primary and acquired resistance to those therapies and to discover novel drug combinations that target concurrent driver mutations for immune mediated adverse events for patients on certain targeted therapies.

Lung Cancer Mutation Consortium

The Lung Cancer Research Foundation coordinates and supports the activities of the Lung Cancer Mutation Consortium (LCMC), an association of more than 20 U.S. cancer centers committed to deepening our understanding of the genetic changes that underlie lung cancers and on improving outcomes in patients whose tumors harbor these oncogenic drivers. Learn more at [LCRF.org/LCMC](https://www.lcrf.org/LCMC).

Community Outreach Programs

Patient Resources & Support Line

LCRF offers free patient materials as well as a toll-free support line: (844) 835-4325

Free to Breathe

LCRF's Free to Breathe Yoga, Kites, and Walk bring participants from all over the nation together to honor loved ones, share community, and fund future research. Find out more at [LCRF.org/events](https://www.lcrf.org/events).

Evening of Innovation

This special event during Lung Cancer Awareness Month in November recognizes newly awarded grantees and highlights the progress that has been made in lung cancer research over the previous year.

#TogetherSeparately livestreams

During the 2020 pandemic, LCRF initiated a series of livestreams to address common questions from patients and caregivers. This grew into an ongoing series with an online community hosted on Facebook Groups. Webinars are on the third Wednesday of each month. Register at [LCRF.org/together](https://www.lcrf.org/together).

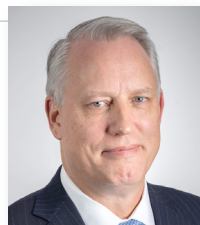
Breathe Easy Outreach to Black Americans

LCRF and the African Methodist Episcopal Church International Health Commission (AMEC IHC) are working together to raise awareness among Black Americans of the prevalence, risk factors, importance of screening, and prevention of lung cancer. Learn more at [LCRF.org/knowyourrisk](https://www.lcrf.org/knowyourrisk).

Staff Contacts

To contact LCRF, please reach out to Sheila Sullivan, Senior Director, Marketing & Communications at ssullivan@lcrf.org.

For a comprehensive staff list, visit the LCRF website: [LCRF.org/staff](https://www.lcrf.org/staff).



Executive Director
Dennis P. Chillemi



VP, Community Engagement & Outreach
Aubrey Rhodes



Director, Scientific Programs
Eugene Manley, Jr., PhD