

**LUNG CANCER
RESEARCH
FOUNDATION**
Living. Breathing. Science.®

ABOUT LCRF

Our Mission

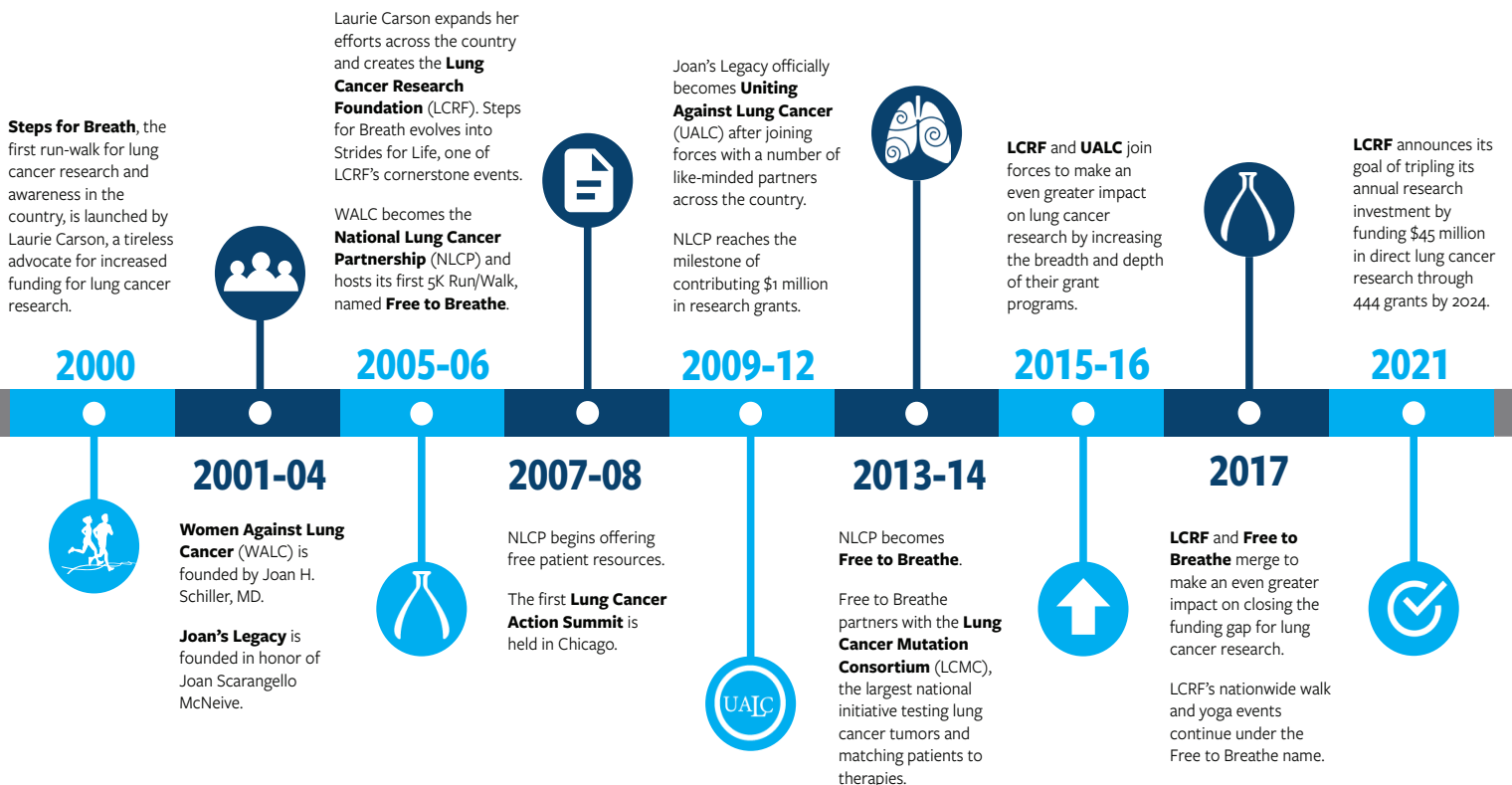
The mission of the Lung Cancer Research Foundation (LCRF) is to improve lung cancer outcomes by funding research for the prevention, diagnosis, treatment and cure of lung cancer.

Our Vision

Our vision is a world free of lung cancer.

LCRF History

The Lung Cancer Research Foundation has evolved over the years, but one thing remains the same: we are determined to create a world without lung cancer. **Together, we can accomplish more than any one of us can alone.**



Research Programs

To date, LCRF has funded 409 research grants, totaling over \$42 million. By 2024, LCRF intends to fund a total of at least \$45 million in direct lung cancer research through 444 grants. Priorities for funding include early detection, drug resistance, and innovation.

LCRF Pilot Grant Program

Funds innovative projects across the full spectrum of basic, translational, clinical, epidemiological, health services, early detection, disparities, and social determinants of health research, with a focus on early investigators.

LCRF Research Grants on Oncogenic Drivers in Lung Cancer

With EGFR Resisters, KRAS Kickers, and MET Crusaders
Supports research projects to characterize, identify, treat or overcome/prevent resistance to therapies in tumors harboring alterations in oncogenic drivers in NSCLC cells, tissues, mouse models, or patients.

LCRF - ALK Positive Research Grant

With ALK Positive

Supports ALK-positive NSCLC research that will impact the outcomes of patients with advanced ALK-positive lung cancer, to ultimately transform care and improve outcomes for these patients.

LCRF Research Grant on Early Detection and Pre-Neoplasia in Lung Cancer

Funds research projects that facilitate or advance the understanding and characterization of pre-neoplasia or approaches for early detection of lung cancer.

LCRF Minority Career Development Award (CDA) in Lung Cancer

For minority postdoctoral/clinical fellows and assistant professors within 10 years of completing their MD and/or PhD degrees working on lung cancer research.

Community Outreach Programs

Patient Resources & Support Line

LCRF offers free patient materials as well as a toll-free support line: **(844) 835-4325**

Free to Breathe

LCRF's Free to Breathe events program brings participants from all over the nation together to honor loved ones, share community, and fund future research. [LCRF.org/freetobreathe](https://www.lcrf.org/freetobreathe)

Evening of Innovation

This gala event highlights the progress that has been made in lung cancer research over the previous year. The 2023 gala will be held Tuesday, September 26 at The Metropolitan Club in New York City. [LCRF.org/gala](https://www.lcrf.org/gala)

#TogetherSeparately livestreams

LCRF hosts regular livestreams with guest experts to address common questions from patients and caregivers, as well as an online community on Facebook Groups. Webinars are generally scheduled monthly. [LCRF.org/togetherseparately](https://www.lcrf.org/togetherseparately)

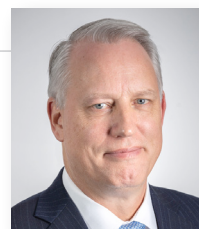
Breathe Easy Outreach to Black Americans

LCRF and the African Methodist Episcopal Church International Health Commission (AMEC IHC) worked together to raise awareness among Black Americans of the prevalence, risk factors, importance of screening, and prevention of lung cancer. [LCRF.org/knowyourrisk](https://www.lcrf.org/knowyourrisk)

Press Contacts

To contact LCRF, please email info@LCRF.org.

For a comprehensive staff list, visit the LCRF website: [LCRF.org/staff](https://www.lcrf.org/staff).



Executive Director
Dennis P. Chillemi



SVP, Strategy
Aubrey Rhodes