

**LUNG CANCER
RESEARCH
FOUNDATION**
Living. Breathing. Science.®

ABOUT LCRF



Our Mission

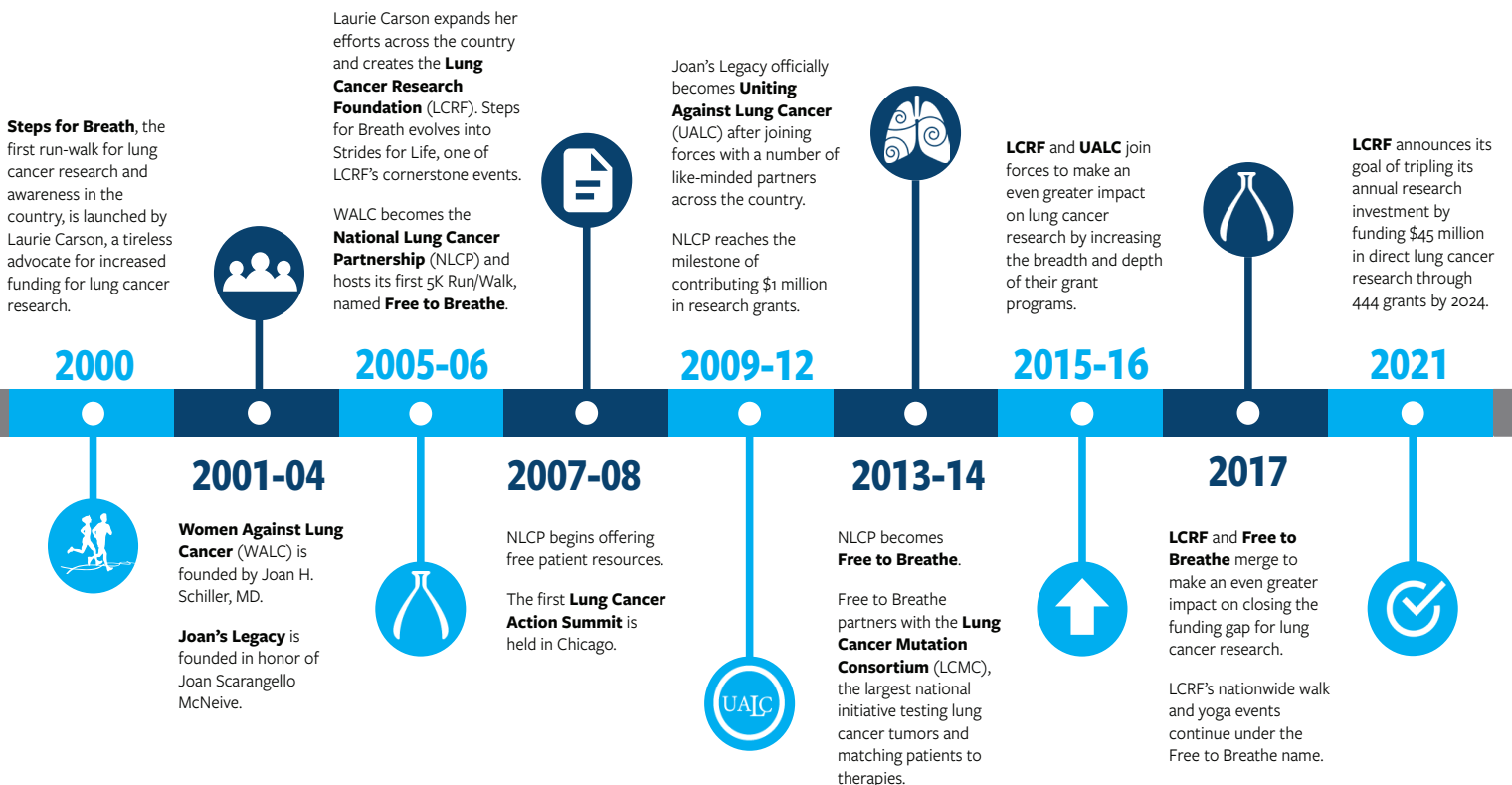
The mission of the Lung Cancer Research Foundation (LCRF) is to improve lung cancer outcomes by funding research for the prevention, diagnosis, treatment and cure of lung cancer.

Our Vision

Our vision is a world free of lung cancer.

LCRF History

The Lung Cancer Research Foundation has evolved over the years, but one thing remains the same: we are determined to create a world without lung cancer. **Together, we can accomplish more than any one of us can alone.**



Research Funding Overview

RESEARCH ROADMAP HIGHLIGHTS

LCRF's Scientific Executive Committee (SEC), a committee comprised of Scientific Advisory Board (SAB) members, developed recommendations for the foundation's research program to address the needs of the lung cancer community and accelerate the pace of lung cancer research. Those recommendations include:

- Inclusion of patients in every aspect of LCRF's research program, from determining funding areas, participating in grant review, education, awareness, and funding.
- Fund research in the areas of greatest need, with the greatest opportunity for impact: early detection, prevention, and diagnostics; understanding resistance; novel and innovative projects.
- Continue investment in basic and early career investigators and expand to include other levels of investigators as well as collaborative and team awards.
- Develop funding partnerships to drive impact and improve outcomes.
- Facilitate scientific knowledge and understanding through convening members of LCRF's SAB with leading scientists, researchers, LCRF grantees, funders, and supporters by hosting meetings throughout the year.

RESEARCH PRIORITIES FOR 2023

To date, LCRF has funded 409 research grants, totaling over \$42 million. By 2024, LCRF intends to fund a total of at least \$45 million in direct lung cancer research. Priorities for funding include early detection, drug resistance, and innovation.

LCRF Leading Edge Grant, seeking to ferret out novel ideas, approaches, methods, and techniques that promise to have a profound impact on lung cancer patients and their treatment teams.

LCRF Research Grant on Early Detection and Pre-Neoplasia in Lung Cancer, which funds research projects that facilitate or advance the understanding and characterization of pre-neoplasia or approaches for early detection of lung cancer.

LCRF Research Grant on Understanding Resistance in Lung Cancer supports projects that focus on characterizing, identifying, treating, overcoming, or preventing resistance to therapies in tumors harboring alterations in oncogenic drivers in non-small cell lung cancer cells, tissues, mouse models or patient tumors.

LCRF's Minority Career Development Award (CDA) for Lung Cancer, which aims to increase the number of highly skilled and trained researchers from groups that are historically underrepresented in academia, medicine, and leadership in lung cancer research.

Community Outreach Programs

Patient Resources & Support Line

LCRF offers free patient materials as well as a toll-free support line: **(844) 835-4325**

Free to Breathe

LCRF's Free to Breathe events program brings participants from all over the nation together to honor loved ones, share community, and fund future research. [LCRF.org/freetobreathe](https://www.lcrf.org/freetobreathe)

Evening of Innovation

This gala event highlights the progress that has been made in lung cancer research over the previous year. The 2023 gala will be held Tuesday, September 26 at The Metropolitan Club in New York City. [LCRF.org/gala](https://www.lcrf.org/gala)

#TogetherSeparately livestreams

LCRF hosts regular livestreams with guest experts to address common questions from patients and caregivers, as well as an online community on Facebook Groups. Webinars are generally scheduled monthly. [LCRF.org/togetherseparately](https://www.lcrf.org/togetherseparately)

Breathe Easy Outreach to Black Americans

LCRF and the African Methodist Episcopal Church International Health Commission (AMEC IHC) worked together to raise awareness among Black Americans of the prevalence, risk factors, importance of screening, and prevention of lung cancer. [LCRF.org/knowyourrisk](https://www.lcrf.org/knowyourrisk)